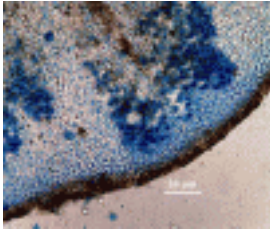


Lichen Anatomy

[ShareThis](#) [1]



[2] [2]

[Circinaria jussuffii](#) [2]



[3] [3]

[Ramalina sinensis](#) [3]



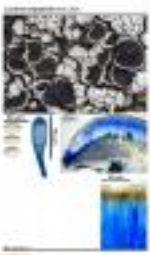
[4] [4]

[Ramalina capitata](#) [4]



[5] [5]

[Ramalina capitata](#) [5]



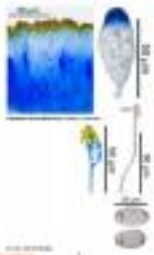
[6] [6]

[Lecanora argopholis](#) [6]



[7] [7]

[Cladonia pyxidata](#) [7]



[8] [8]

[Caloplaca flavorubescens](#) [8]



[9] [9]

[Caloplaca flavorubescens](#) [9]

Source URL: <http://mycolich.irost.org/content/lichen-anatomy>

Links:

- [1] <http://mycolich.irost.org/content/lichen-anatomy>
- [2] <http://mycolich.irost.org/Image/2573?pid=316>
- [3] <http://mycolich.irost.org/node/2293?pid=316>
- [4] <http://mycolich.irost.org/node/2292?pid=316>
- [5] <http://mycolich.irost.org/node/2291>
- [6] <http://mycolich.irost.org/node/2290>
- [7] <http://mycolich.irost.org/node/2289>
- [8] <http://mycolich.irost.org/node/2288>
- [9] <http://mycolich.irost.org/node/2287>